

4

MLC 2635

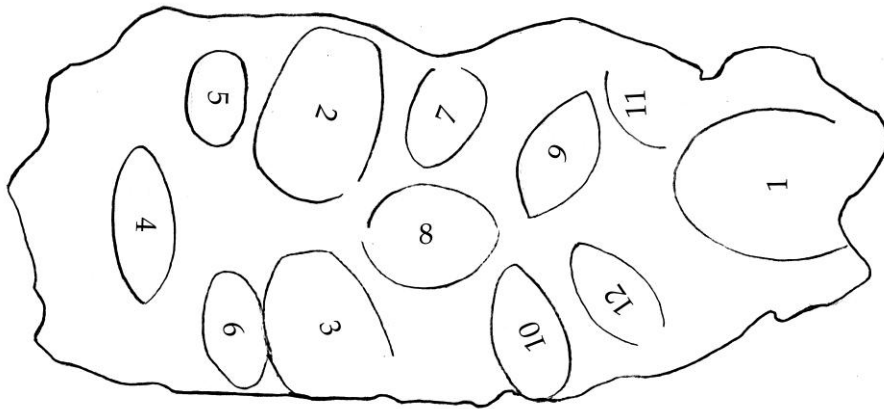
Registered slave sale

Ring-bulla: 36 × 43 × 39

1 *andrapadōn* (Uruk) + 1 *epōnion* (Uruk) + 1 *chreophylax* (Uruk) + 9 private seals

Uruk, 94 S.E.

Publ. YCS 3 no. 16; Wallenfels 2000, p. 338, figs. 7–8.



4-1. Ellipse. 19 × 25+. Nude heroized king, horned head full front, stands facing three-quarter left holding an upright lance in his upheld right hand, with a *chlamys* or animal skin draping from his left elbow.

Inscription: (1) ΧΡΕΟΦΥΛΑΚ[ΙΚΟΣ] (2) ΟΡΧΩ[Ν]

Publ. BRM 4, p. 54 and pl. 50, no. 56.

Other impressions of this seal on Uruk ring-bullae are Johansen 1930 no. 10 (91 S.E.; cf. YCS 3 no. 17,1: 92 S.E.); AUWE 20 nos. 53-1 (n.d.) (YCS 3 no. 18,1), 197-1 (n.d.), 433-1 (n.d.).

Rostovtzeff (1932, p. 30, no. 16; see further Lindström 2003, p. 48) suggested that the figure is the representation of a statue of a king, perhaps similar to the later bronze Terme Ruler (Rome, National Museum 1049; see Fleischer 1991, p. 107). The statue of a deified Seleucus I bearing horns was said to have been erected in the western capital at Antioch on the Orontes (Appian, *Syr.* 57). The horned head of Seleucus I first appears on the coins of his son Antiochus I issued at Sardes ca. 275 BCE (Houghton and Lorber 2002 nos. 322–23; cf. Messina 2004). For horned royal portraits and their reflection of Seleucid royal cults, see Erickson 2009, pp. 206–48.

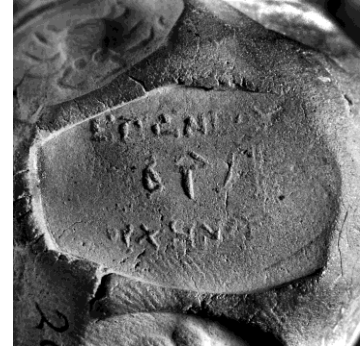


4-2. Barrel. 19+ × 14. Inverted half-anchor, crown up, arm left, to the right of the date.

Inscription: (1) ΕΠΩΝΙΟΥ (2) ἸΔ΄ 1 (3) ΟΡΧΗΝΟΥ

Publ. YCS 3, pl. IX, fig. 4.

Another impression of this seal on a bulla from Uruk is found on Johansen 1930 no. 10: 91 S.E. (cf. YCS 3 no. 17,2: 92 S.E.). The *epónion*, a general sales tax in evidence at Uruk (see Rostovtzeff 1932, pp. 76–79, and Lindström 2003, pp. 54–55, for further references) and, perhaps, Nippur (cf. Gibson 1994 no. 1-6), is not known from Seleucia on the Tigris where the *katagraphíon* tax appears to have functioned in its place (see Messina and Mollo 2004, pp. 21–22).

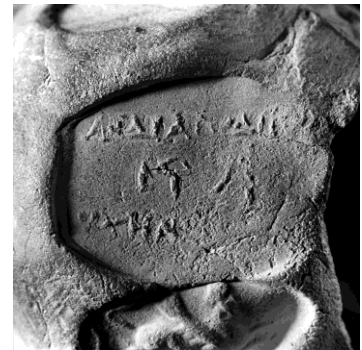


4-3. Barrel. 18 × 14+. Inverted half-anchor, crown up, arm left, to the right of the date.

Inscription: (1) ΑΝΔΡΑΠΙΤ'Ο'ΔΙ'Κ'[ΗΣ] (2) ἸΔ΄ 1 (3) ΟΡΧΗΝ'ΟΥ

Publ. YCS 3, pl. IX, fig. 5.

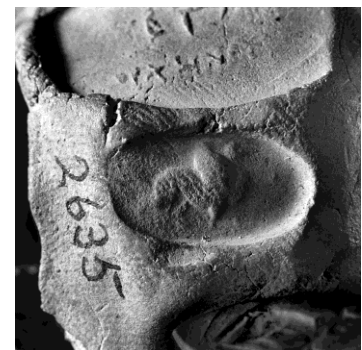
For the *andrapadón*, a tax on the sale of slaves, see Doty 1977, pp. 322–24; Lindström 2003, p. 55; Messina and Mollo 2004, pp. 20–21.



4-4. Pointed ellipse. 19 × 8. Recumbent bull facing profile right upon altar-like patterned base (Taurus); horizontal crescent above back.



4-5. Ellipse. 14 × 7.5. Beardless, bare-headed sphinx walking profile right.



4-6. Ellipse. $16 \times 8+$. Human-headed winged bull leaping profile right; fox leaping profile right beneath; vertical crescent left.



— Nos. 4-4, -5, -6 are located between the bulla seam and the tax stamps; Nos. 4-7ff. are in the remaining area at the top of the bulla between the *chreophylax* seal and the bulla seam on the opposite side.

4-7. Pointed ellipse. 14×9.5 . Crab facing up (Cancer); vertical crescent left.



4-8. Ellipse. 16×14 . Female standing three-quarter left with staff held in outstretched right hand, left arm hangs behind.



4-9. Pointed ellipse. 17×10 . Wingless sphinx seated profile right with left paw extended.



4-10. Pointed ellipse. $16+ \times 9$. Winged bull leaping profile right; vertical crescent left.



4-11. Ellipse fragment. $9+ \times 13+$. Illegible.



4-12. Pointed ellipse. $17+ \times 9$. Goat-fish profile right (Capricorn); horizontal crescent above back, 6-pointed star right.



5

MLC 2634

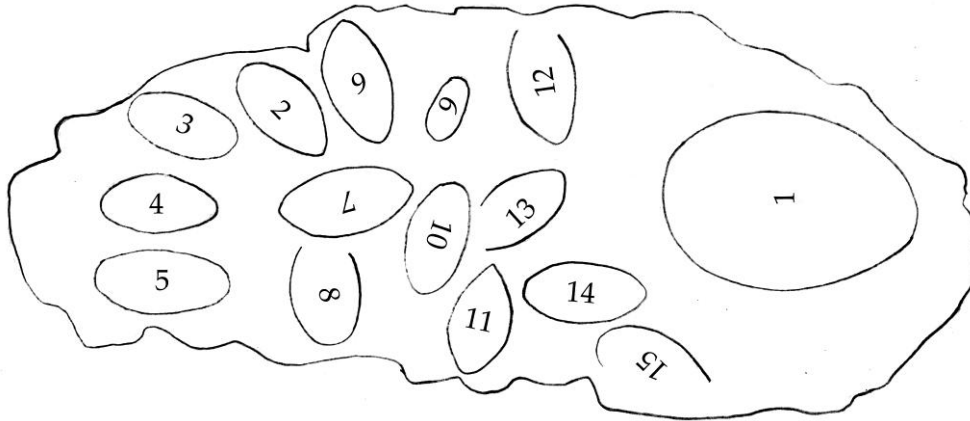
Ring-bulla: $35 \times 41 \times 41$

1 *chreophylax* (Uruk) + 14 private seals (including 2 pairs of duplicates)

Uruk, ca. 66–ca. 82 S.E.

Publ. YCS 3 no. 44.

Registered document



5-1. Ellipse. 20 × 25+. Nude Apollon standing facing three-quarter left, holding arrow and bow nearly horizontally in raised right hand, and leaning his left elbow on a tripod behind him; tree trunk with snake coiled around at far left.¹

Inscription: (1) ΧΡΕΟΦΥΛΛΑ[ΚΙΚΟΣ] (2) ΟΡΧΩΝ

Publ. BRM 4, p. 54, and pl. 50, no. 55; Wallenfels 1996, pl. 27, fig. 1; Wallenfels 2000, p. 334, fig. 2; Lindström 2003, pp. 40–41, fig. 44.



5-2. Ellipse. 15 × 10. Man-faced ibex leaping profile right.

Seal (= AUWE 19 no. 454) used by Anu-aḥ-iddin/Ina-qibīt-Anu //Luštammar-Adad:

2/XI/50 S.E., witness, prebend sale (YOS 20 23 B2 = YOS 20 24 B2)

-/-/[31–66] S.E., witness, prebend sale (HANE/M 8 277f. [BM 109957] B3).

Publ. Mitchell and Searight 2008, p. 240, no. 777a (HANE/M 8 277f. B3).



¹ *Contra* Rostovtzeff (1932, p. 37, no. 44, 1), this seal is to be distinguished from a similarly posed Apollon on a later Uruk *chreophylax* seal, one example of which is accompanied by a tax seal dated 132 S.E. (Johansen 1930, p. 416, no. 6a; see further Lindström 2003, pp. 39–42).

5-3. A duplicate impression of the above (15 × 10).

These duplicate impressions are connected by a pair of shallow parallel nail impressions.

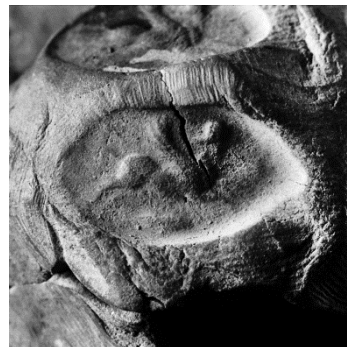


5-4. Pointed ellipse. 14 × 9. Human-headed winged bull, wearing indistinct “feathered” crown, leaps profile right above right profile fish.



5-5. A duplicate impression of the above (14 × 9).

These two duplicate impressions are connected by a series of very fine lines, some of which appear to cross each other as would the strands in a piece of cloth.



— The royal official’s seal impression No. 5-1 stands at the bulla seam; the pairs of private seal impressions Nos. 5-2,-3 and -4,-5 are located on the opposite side of the seam; the individual private seals are arrayed in between in the remaining area over the top of the bulla.

5-6. Ellipse. 8.5 × 16. Male standing three-quarter left, weight on forward leg, wearing knee-length garment, himation held across waist by left hand, sprig with three pairs of leaves held forth in right hand.

Compare SIS III, pls. 103–04, nos. Og 1–24.



5-7. Pointed ellipse. 17×10.5 . Winged quadruped profile right, head, legs, and tail indistinct; monogram $\dot{\circ}$ beneath.



5-8. Ellipse. 13×10 . Winged quadruped profile right; partial imprint of hoop shoulder at left.



5-9. Ellipse. 12×5 . Winged bull leaping profile right.



5-10. Ellipse. 16×9 . Winged bull leaping profile right; below, fox leaping profile right.

Seal (= AUWE 19 no. 560) used by Kidin-Anu/[...]:²
17/I/68 S.E., witness, division of property (YOS 20 32 L2).



² Note witness #3: /Mukīn-apli//Kurī, witness #4: /Anu-[...]/[...].

5-11. Pointed ellipse. 8.5×15 . Fish-*apkallu* standing profile left, *bandaddû*-bucket in lowered left hand, *mullilu*-sprinkler in raised right hand, pointed cap; baseline.

Seal (= AUWE 19 no. 183) used by Anu-aḥ-ušabši/Kidin-Anu //Ekur-zākir:

-/XI/[51–66] S.E., witness, gift of a slave (OECT 9 12 L4 = OECT 9 13 L4);

22/III/67 S.E., witness, duty roster (BRM 2 17 T1);

20/VIII/68 S.E., witness, quitclaim (BRM 2 18 T2).

Anu-aḥ-ušabši's titles include *āšipu Anu u Antu, šešgallu ša Rēš*, and *tupšar Enūma Anu Enlil* in canonical tablet colophons (Hunger 1968, p. 38, nos. 87A–D).

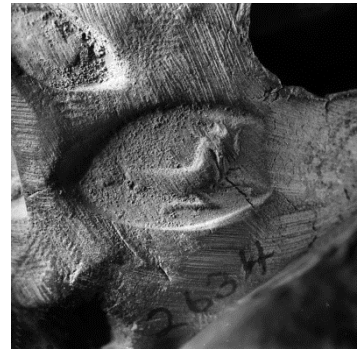
Publ. Buchanan 1982, p. 19, no. 30 (OECT 9 13 L4).



5-12. Ellipse. $14+ \times 8.5$. Goat-fish profile right, two horns (Capricorn).

Seal (= AUWE 19 no. 671) used by Ištar-šum-ēriš/[...]:

-/I/68 S.E., witness, prebend sale (YOS 20 33 T4).



5-13. Ellipse. $15+ \times 9$. Lion leaping profile right; animal leg right; Aram. 𐤒𐤍 above, 𐤍 below.

Seal (= AUWE 19 no. 828) used by Nidintu-Anu/Anu-uballit //Aḥ-ūtu:

20/VI/71 S.E., witness, land sale (BRM 2 20 T1 = YOS 20 34 T1).

The upper inscription appears to be a hypocoristic form of the seal owner's personal name rendered in Aramaic script (Dougherty 1932, pp. 94–97; YCS 3 no. 44,2; Oelsner 1986, pp. 249–50 and n. 918; Mitchell and Searight 2008, p. 254, no. 22; Pearce 2010, pp. 307–09); the 𐤍 in the lower inscription remains enigmatic.



5-14. Ellipse. 16 × 9. Winged bull leaping profile right; indistinct object beneath, triangle upper right.

Seal (= AUWE 19 no. 593) used by Kidin-Anu/Ištar-ḫītū^a:

22/VI/67 S.E., witness, quitclaim (YOS 20 31 L1);

20/VIII/68 S.E., witness, quitclaim (BRM 2 18 T3).

Kidin-Anu's titles include *sepīr* (BRM 2 13: 27, 21/I/49 S.E.), *sepīr makkūr Anu* (VAS 15 11: rev. 15, 12/V/83 S.E.).



5-15. Ellipse fragment. 15 × 9+. Beardless sphinx leaping profile right.



Remarks

The date of the registered document originally enclosed within No. 5 is delimited as follows: The motif of No. 5-1, a standing Apollon examining an arrow while resting his left elbow on a tripod, first appears on the reverse of coins of Seleucus II (r. 66–87 S.E.) (Houghton and Lorber 2002, I/I, p. 232), establishing the onset of this king's reign as the *terminus a quo*. Six different private seal impressions, Nos. 5-2,-3, 5-10, 5-11, 5-12, 5-13, and 5-14 also appear on dated Seleucid Uruk archival tablets. Of these, one, No. 5-14 (= AUWE 19 no. 593), is known to have been replaced by its user with a new seal, AUWE 19 no. 616:P (Weisberg 1991, p. 22, no. 116, and pl. 65, R.E. [R2], first evidenced in 2/VI/82 S.E., thus establishing this date as the *terminus ad quem*; another impression of this new seal occurs on AUWE 20 no. *34-1, dated 12/V/83 S.E. The dates of the activities of these six tablet sealers in the cuneiform corpus cluster strongly around the median date of 68 S.E., suggesting that No. 5 dates to the earliest years of the reign of Seleucus II. Here the *chreophýlax* of Uruk would seem to have quite quickly adapted the new coin reverse motif for his official symbol, but it was replaced by 76 S.E. with a new seal displaying a long slender frontal Athena shouldering a spear diagonally with her right hand and holding a circular shield close to her upper torso with her left hand (AUWE 20 no. 77-1). In contrast, at the same time at Seleucia on the Tigris, the capital city's *chreophýlax* introduced a seal depicting a deified head of Seleucus I that would remain in continuous use, appearing more than fifty times, through 100 S.E. (SIS I, p. 39, Se 1; McDowell 1935, p. 40, nos. IA1b[1]–[2]); note its occurrence once on a bulla excavated from Rěš (AUWE 20 no. 89-2 [Messina 2005, p. 40, fig. 6]).